



MONTHLY MEMBERSHIP PROGRESS REPORT

District 325B1

Results as of: 10/31/2015

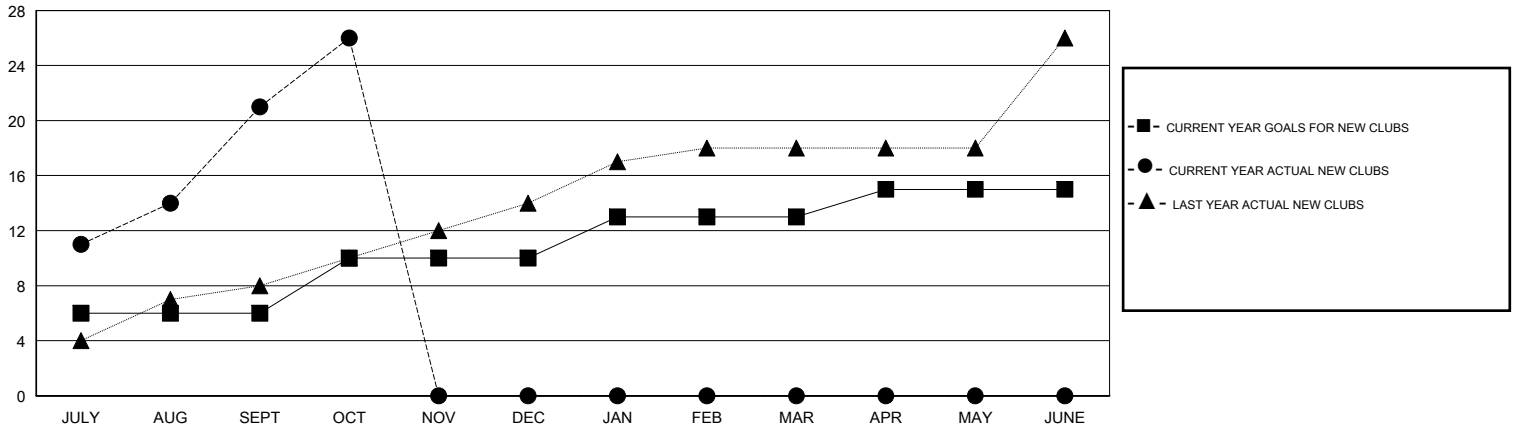
GMT: NAZMUL HAQUE

LOCATION NEPAL

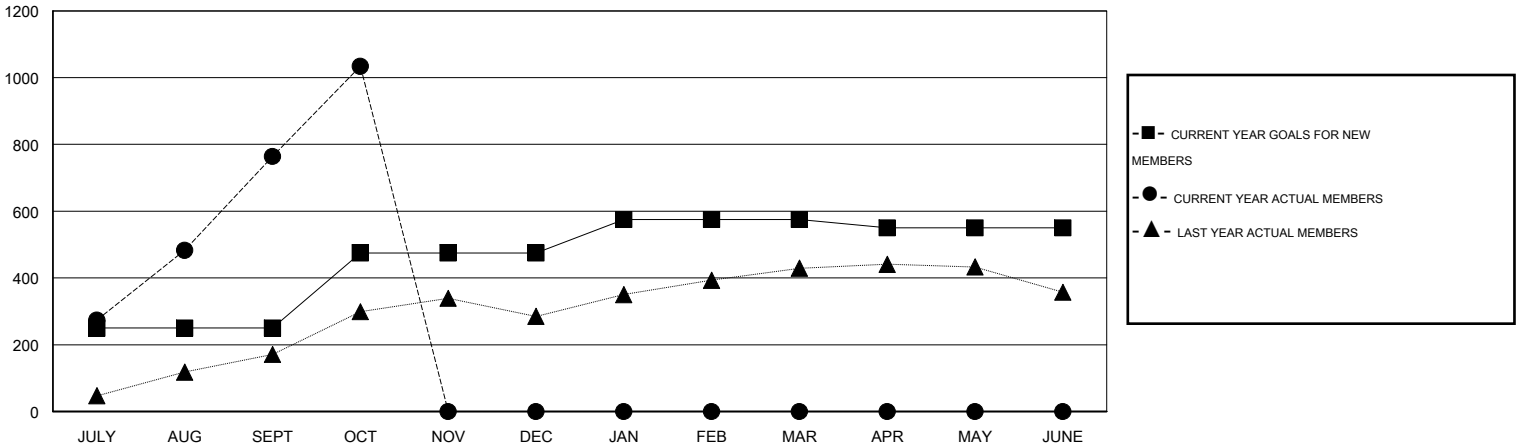
GMT CA 6

Clubs					Members				
RESULTS FOR 2015-2016					RESULTS FOR 2015-2016				
QUARTER	NEW CLUB GOAL	NEW CLUBS	DROPPED CLUBS	NET GAIN/LOSS	QUARTER	NEW MEMBER GOAL	CHARTER AND NEW MEMBERS ADDED	DROPPED MEMBERS	NET GAIN/LOSS
JULY/AUG/SEPT	6	21	0	21	JULY/AUG/SEPT	250	1,064	300	764
OCT/NOV/DEC	4	5	0	5	OCT/NOV/DEC	225	305	35	270
JAN/FEB/MAR	3	0	0	0	JAN/FEB/MAR	100	0	0	0
APR/MAY/JUNE	2	0	0	0	APR/MAY/JUNE	-25	0	0	0

GOALS AND ACTUAL NEW CLUBS CUMULATIVE



GOALS AND ACTUAL MEMBERS CUMULATIVE



DROPPED CLUBS: 0	141 CLUBS OF 195 ADDED 1 OR MORE NEW MEMBERS	<u>GENDER DISTRIBUTION</u>	
<u>DROPPED MEMBERS</u>		MALE	4,790 (81.13%)
DECEASED	1	FEMALE	1,114 (18.87%)
CLUB CANCELLED	0	<u>FAMILY UNIT MEMBERS</u> 3,205	
OTHER	334	<u>HEAD OF HOUSEHOLD</u> 1,164	
TOTAL	335	<u>NON-HEAD OF HOUSEHOLD</u> 2,041	

[CLICK HERE FOR HEALTH ASSESSMENT DATA](#)